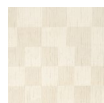


# Fulton Chair



Mosaic  
Shell



Node  
Nocture



Rosslyn  
Argent

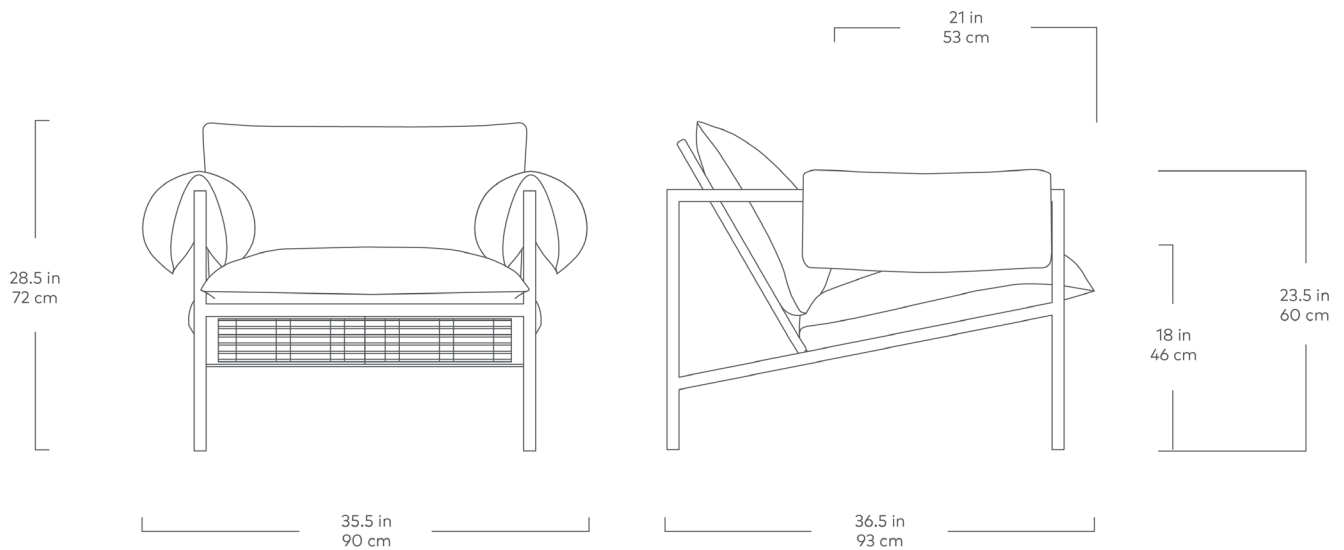
Ease back and relax with the Fulton Chair, a study in aesthetic balance and proportion that contemporizes Brazilian Mid-century style. Cushion-wrapped arms and plush, organic upholstery take the edge off a sturdy steel foundation, angled precisely to achieve just the right combination of comfort and support. The mixed materials work harmoniously to create an original design that will draw you in and soothe both body and mind. Works well in pairs and is suitable for residential or commercial interiors.

Design Trade Professionals: We aim to keep our designs in stock and ready to ship quickly for projects on a tight timeline. Designs may be customized with COM and alternate finishes (minimum quantities may apply).





# Fulton Chair



- Back and side bolster cushions contain an eco-friendly, synthetic-down fill made from 362 recycled plastic water bottles.
- Seat cushion is crafted with high resiliency polyurethane foam covered in a Dacron wrap to maintain shape.
- Reversible seat and back cushions.
- Velcro attachments on the underside of side bolster cushions helps with a secure placement on the metal frame.
- The Mosaic Shell fabric is an exclusive checkerboard pattern designed by Gus\* Modern. This distinctive textile has a unique look and is inspired by wabi-sabi aesthetics and principles.
- Upholstered back panel gives the chair a clean, seamless look.
- Webbed suspension system for added comfort.
- Bench-made, powder-coated steel frame.
- Non-marking leveler feet can be adjusted for stability on uneven floor surfaces.
- Manufactured to comply with California Prop Phase 2 standards.
- Manufactured to meet California TB117-2013 fire safety standards without the use of flame retardant additives in the upholstery foam.





PROFESSIONALS

**rypen**  
STUDIO

Register for Our Exclusive  
Project Builder + Ordering Platform

